

Panels & Posts

Simple, economical, modular design

Custom Equipment Company

For more information please call 866-333-0728

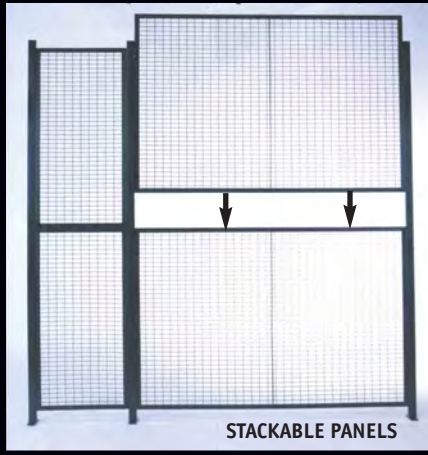
Panels

MODULAR PANELS

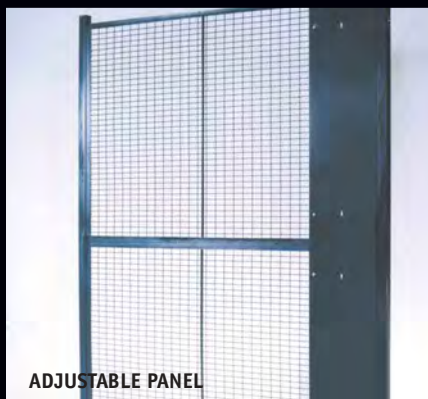
- Ten widths, 1' to 10' in one foot increments.
- Two heights: 4'-0" and 5'-0"
- Full height partition walls are built by stacking two or more panels between posts.
- Mesh: 10 gauge wire woven into 2" x 1" rectangular openings.
- Frame 1-1/4" x 1-1/4" x 1/8" steel angle.
- Custom size panels available.
- Alternate meshes available, see page 11.

ADJUSTABLE PANEL

- Solid sheet metal panel.
- Fill small gaps in runs.
- Allows for adjustment from 1" to 11".
- Ideal for hard to measure areas.
- Two heights: 4' and 5' match panel heights.



STACKABLE PANELS



ADJUSTABLE PANEL

WOVEN WIRE PANELS 4 FT. HIGH

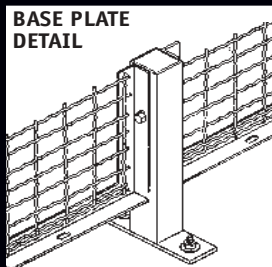
Part No.	Width x Height	Weight
104	10'-0" x 4'-0"	63
94	9'-0" x 4'-0"	58
84	8'-0" x 4'-0"	53
74	7'-0" x 4'-0"	46
64	6'-0" x 4'-0"	41
54	5'-0" x 4'-0"	36
44	4'-0" x 4'-0"	31
34	3'-0" x 4'-0"	23
24	2'-0" x 4'-0"	18
14	1'-0" x 4'-0"	13

WOVEN WIRE PANELS 5 Ft. High

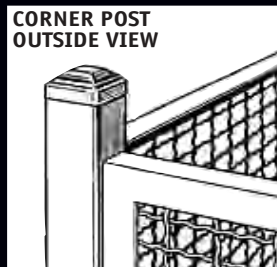
Part No.	Width x Height	Weight
105	10'-0" x 5'-0"	74
95	9'-0" x 5'-0"	68
85	8'-0" x 5'-0"	63
75	7'-0" x 5'-0"	54
65	6'-0" x 5'-0"	48
55	5'-0" x 5'-0"	42
45	4'-0" x 5'-0"	36
35	3'-0" x 5'-0"	27
25	2'-0" x 5'-0"	22
15	1'-0" x 5'-0"	16

ADJUSTABLE PANEL

Part No.	Width x Height	Weight
AP4	1' 3-7/8" x 4' 0"	13
AP5	1' 3-7/8" x 5' 0"	16



BASE PLATE
DETAIL



CORNER POST
OUTSIDE VIEW



RUN POST
INSIDE VIEW



TEE POST INSIDE
VIEW

Posts

POSTS

- Stock sizes: 8'-5 1/4", 10'-5 1/4", 12'-5 1/4".
- Standard hole layout allows for 3-1/4" sweep-space.
- Posts project 2" above top of panel.
- Standard Baseplate: 2" x 7" with holes for anchors.
- Special length posts are available to 40'.
- Oversized baseplates are available.
- Floor anchors (3/8") are included with your order.

STOCK SIZE POST

Part No.	Height	Weight
RP-8		
Run	8'-5-1/4"	20
CP-8/TP-8		
Corner/Tee	8'-5-1/4"	21
RP-10		
Run	10'-5-1/4"	23
CP-10/TP-10		
Corner/Tee	10'-5-1/4"	24
RP-12		
Run	12'-5-1/4"	33
CP-12/TP-12		
Corner/Tee	12'-5-1/4"	33

Alternate Materials

Choose from Special Meshes, Sheet Metal and Lexan

Distributed By: Custom Equipment Company

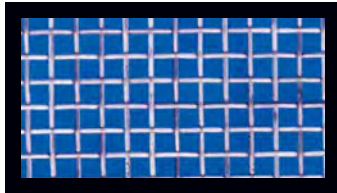
sales@custommhs.com

Other materials can be used when our standard 2" x 1" opening mesh does not meet your needs. WireCrafters stocks several different sized meshes, sheet metal, lexan, expanded metal and welded wire for these special applications. Several of

the more popular items are pictured below. Our large inventory and modern manufacturing techniques allow us to make fast delivery of custom product, giving you an edge on the competition.

WireCrafters can upgrade the panel frames to larger angle, and increase the tubing size of the posts to meet your exact requirements. We are experienced with these special projects and welcome them.

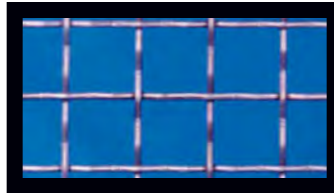
special mesh



1/2" center-to-center square
12 gauge (3/8" square opening)

Uses: Any application which requires control over small items.

- Machine guards
- Small liquor bottles
- Federal Reserve
- Drug control



1-5/8" center-to-center square
8 gauge (1-1/2" square opening)

Uses: Galvanized partitions

This heavy mesh eliminates warping which may occur during the hot dip galvanize process.

Also used when our standard 2" x 1" 10 gauge is not strong enough.



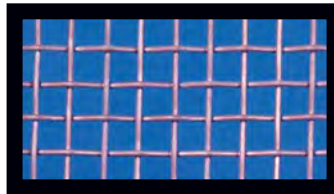
2-1/4" center-to-center square
6 gauge (2" square opening)

Uses: Heavy duty construction

- Government facility import areas
- Police holding cells
- Prison lockup areas



2" center-to-center square
8 gauge welded wire mesh
(1- 7/8" square opening)



3/4" center-to-center square
10 gauge (5/8" square opening)

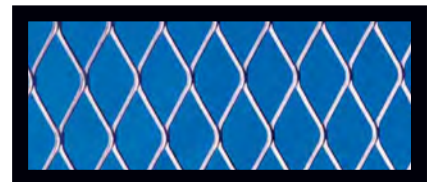


1-1/2" diamond mesh
10 gauge

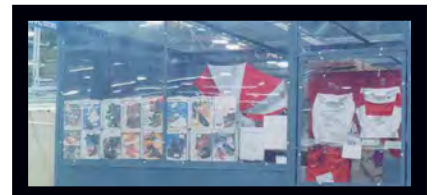
sheet metal, lexan® and expanded metal



16-GAUGE SHEET METAL



EXPANDED METAL



LEXAN® CLEAR VIEW PANELS

Style 840 Specs

866-333-0728

Panels, Posts, Doors, Hardware & Finishes

WireCrafters®

Standard Color



Gray

Optional Colors



Buff



Yellow



Blue



Flat Black

Specs

PANELS

Panels are constructed of 10 gauge steel wire, woven into 2" x 1" rectangular mesh and securely welded to a 1-1/4" x 1-1/4" x 1/8" steel angle frame. Frames have 7/8" x 7/16" slotted holes for mounting to posts and adjacent panels. Panels four to seven feet wide have one 1/4" x 3/4" stiffener welded to the frame. Wider panels have two stiffeners.

POSTS

Posts are made of 2" x 2" x 14 gauge (.083) steel tubing. Base plates of 2" x 7" x 1/4" steel flat with two 7/16" round holes for floor anchoring, are welded to each. Top of post is finished with decorative cap. Posts are drilled with 1/2" holes to accept hardware for mounting panels and doors. Hole spacing is set to leave a 3-1/4" sweep space below the panels. Posts have a 2" projection above the panels.

PLEASE NOTE...

Representation of color is as close as printing techniques allow.

DOORS

Doors are constructed of 10 gauge steel wire, woven into 2" x 1" rectangular mesh and securely welded 1-1/4" x 1-1/4" x 1/8" steel angle frame. Stiffeners, two horizontal and one vertical, of 1/4" x 3/4" steel flat are securely welded to the frame behind the mesh. Two gate posts, hardware, and padlock lugs are supplied with each door. Cylinder locks are available.

HARDWARE

All erection hardware is supplied. Panel mounting hardware is 3/8" standard thread grade two plated fasteners. Floor anchors are 3/8" wedge type.

FINISH

Nonplated parts receive one coat of gray acrylic enamel. Touch up paint is included with each order.

WireCrafters

Distributed By: Custom
Equipment Company
866-333-0728
919-847-5765 fax
sales@custommhs.com
www.custommhs.com